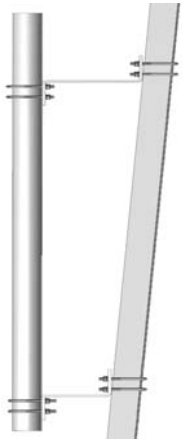


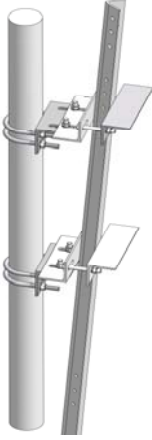
## Self Support Towers: Antenna Mounts



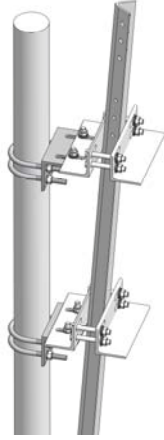
AMS-02



AMS-03



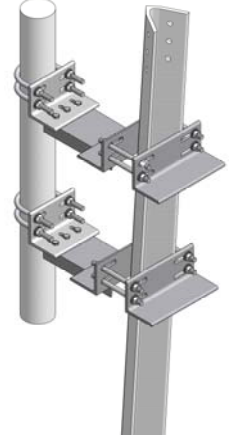
AMS-04



AMS-05



AMS-06



AMS-07



AMS-08



AMS-09



AMS-10



AMS-11



AMS-12



AMS-13

### MATERIAL

- Steel Grade: CSA G40.21
- Hardware: Gr. 5
- Pipes: Sch40
- All material is hot-dip Galvanized after fabrication

### TBD

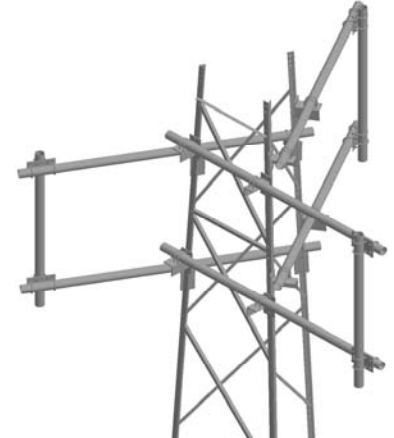
- Existing Pole Diameter or Tower Leg Size
- Antenna Pole Diameter & Length



AMS-14 (FOR MW TIE-BACK)



AMS-15



AMS-16